

## Some of our References

- AUSTIN
- Prof. Arch. EMILIO BATTISTI
- BASF
- Beb INGG
- BRITISH TELECOM
- CIT
- CARIPLO
- CITTA' DI TORTONA
- ELETTRONAMICA
- FIERA DI MILANO
- FOSTER WHEELER
- GIANNI VERSACE
- INTERTECNO
- IPERCOOP
- MODIFIN
- MOTOROLA
- ORTESA
- SULZER
- TECNIMONT
- TEKNE
- MEDIASET GROUP



## Most common jobs

- Residential Buildings
- Offices
- Schools and Universities
- Mega Store Centers
- Hospitals
- Sport Centers
- Telecommunication Centers
- Data Centers
- Television Production Studios
- Teatres
- Holiday Villages
- Hotels and Restaurants
- Pharmaceutical Industries
- Mechanical Industries
- Food Industries

### Prando – Busetti – ASC eng. Associated

Via Roma, 51

24042 Capriate (Bg) Italy

Phone: +39 02 9209 2185 – Fax: +39 02 9091 137

e-mail: [d.prando@gradozero.it](mailto:d.prando@gradozero.it) - [sacha@cosfi.net](mailto:sacha@cosfi.net)

<http://www.cosfi.net/>

**Davide Prando**

**Sacha Busetti**

**ASC engineering**

**Associated**

*Architectural and  
engineering integrated  
design*

### BUILDINGS CONSTRUCTIONS

Residential

Hotel

Industrial

Health

### PLANTS

Heating Ventilation Air Conditioning

Electric and Lighting Plants

Lightning Protection

Special electrical and control plants

Water Systems

### SERVICES PROJECTS

Architectural

Engineering

Work Security

Environmental friendness

Energy optimisation

Technical and Administrative  
Contacts:

---

Phone: +39 02 9209 2185

Email:

[d.prando@gradozero.it](mailto:d.prando@gradozero.it)

[sacha@cosfi.net](mailto:sacha@cosfi.net)

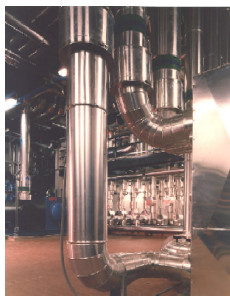
# Our integrated offer

## *Our association*

The relationship between Prando, Busetti Studios and ASC Engineering makes it possible to take advantage of a wide range of expertise from a single consultant.

This unified approach allows us to face and work out a wide range of technical and architectural challenges (high reliable and uninterrupted power supply, systems integration, low cost maintenance plants, environmental friend plants, multi styles architectural integration, etc.).

Our association is made by senior engineers and architects with important experience on clients located both in Italy and in several other countries.



Rational Technical plants environmental friends, with low maintenance and management costs

## *Project and Contract Management*

With our experience we support and solve all the client's needing, from the site research to the construction contract. We also assist the client during all the negotiations with the contractors.

In order to obtain a cost reduction during the works, the Cost-plus management is also supplied.

### *What we offer:*

Energy peak needing and consumption forecast calculations.  
Design and calculation for mechanical and thermal plants, electrical and special electrical plants, components, apparatus and machines selection.  
Works direction, plants starting, settings regulations and final inspections.  
Project management and costs control.  
Expert judgments, energy audit, trouble-shooting and problem solving.  
Technical and economical consulting for the energy (gas and electricity) purchase optimisation.  
Local energy generation and renewable energy source exploitation.

## *Design and Works Direction*

We offer the needed support to realize the work, from the incubation stage to the final design.

We also support the customer in obtaining the required institutional agreements and certifications.

## *Innovative plants and solutions*

Being up to date with all the new technologies and solutions, we can offer a wide range of modern technical proposal such as:

- Geothermal and Stratum Water Heating Pumps
- Cold Radiant Ceilings
- Displacement Ventilation
- Thermal Accumulation
- Cogeneration
- Kinetics Systems for Uninterruptible Power Supply
- Remote Supervision and Control
- On-demand architecture for network-critical physical infrastructure

## *Custom Plants Design*

We design the custom plants in order to obtain costs and benefits optimisation for the first construction, both for the maintenance and management.

### *World Wide Experience*

Our structure has made designs all over the world. We speak the main European languages and our designs are multi standard compliant (UNI CEE, AFNOR, DIN, BS, ISO, ASHRAE, etc).